



VBU-PWM5-IDP

Version V3.0

Product description

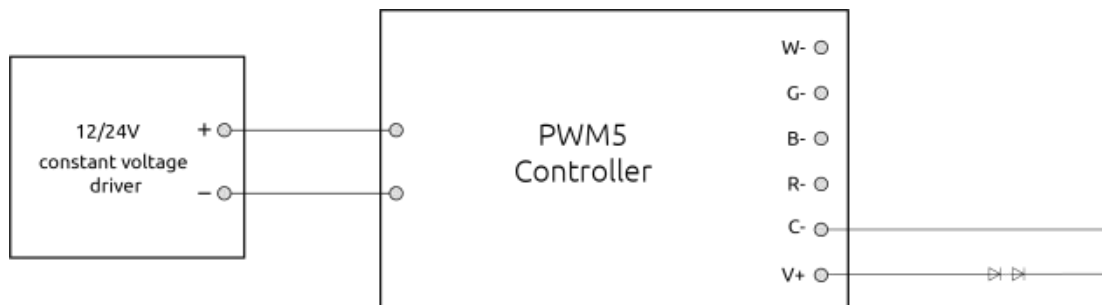
VBU-PWM5-IDP is a Bluetooth controllable, Casambi enabled 5 channel PWM dimmer for constant voltage LED loads, such as LED strips and constant voltage LED modules. It can be configured with 3 different fixture profile for 1,2,5-channel applications (dimming, tunable white, RGBCW).

VBU-PWM5-IDP is protected over current, short circuit situations and against reverse polarity.

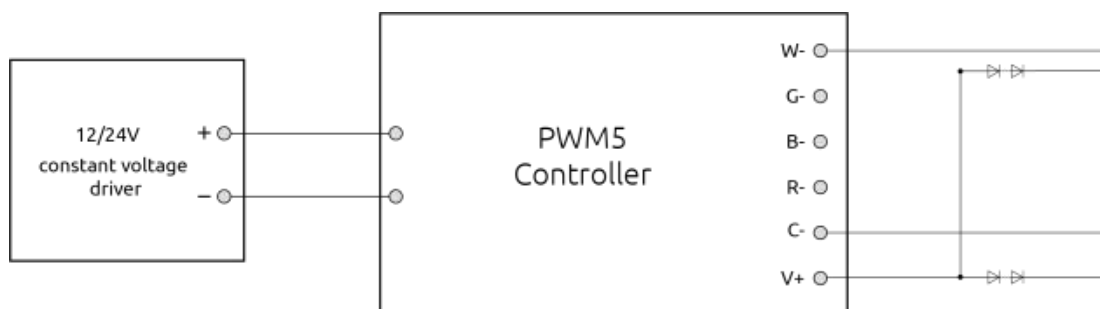
Specification parameters

Input voltage(DC)	• 12/24V
Output voltage(DC)	• 12/24V
Output power (24 V DC)	• 240W
Output power (12 V DC)	• 120W
Max(free allocation to channels) output current	• 10A
Ambient temperature t_a	• -20°C ... +40 °C
Max. casing temperature t_c	• 75 °C
Storage temperature t_s	• -25 ... +75 °C
Life time	• up to 50,000 h
Dimensions L x W x H	• 146 * 35.5 * 28mm
Wire range, solid	• 0,75–2,5 mm ²
Wire strip length	• 6-8 mm
Degree of protection	• IP20
Frequency	• 4 KHz

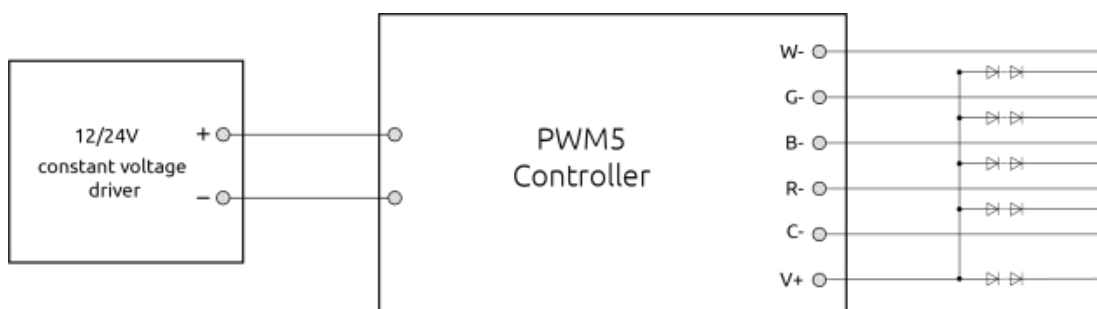
Wiring diagram, for profile 35248(dim)



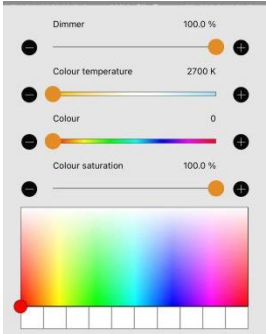
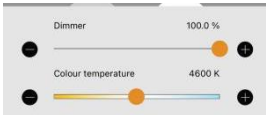


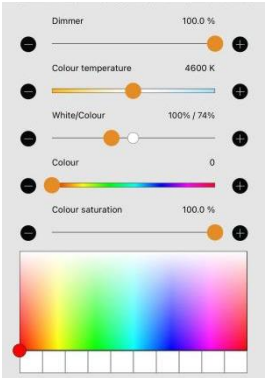
Wiring diagram, for profile 35247 (tunable white)



Wiring diagram, for profile 40185 & 39672 & 34015



Fixture profiles

Profile#	Profile name / in app description	Description	Manual app control
34015 (Default)	VBU-PWM5-IDP	For RGBCW application	
35247	VBU-PWM5-IDP(TW)	For tunable white application	
35248	VBU-PWM5-IDP(DIM)	For dimming application	
40185	VBU-PWM5CH-IDP	For 5channels separately dimming	
39672	VBU-PWM5-IDP(TWRGB)	For RGB/TW application	

Change fixture profile

- _ The default fixture profile in device is “VBU-PWM5-IDP”.
- _ If need to change the fixture profile of the device, make sure it is in unpaired status.
- _ Follow steps in Figure 2, change the fixture profile to the one suitable for your application.

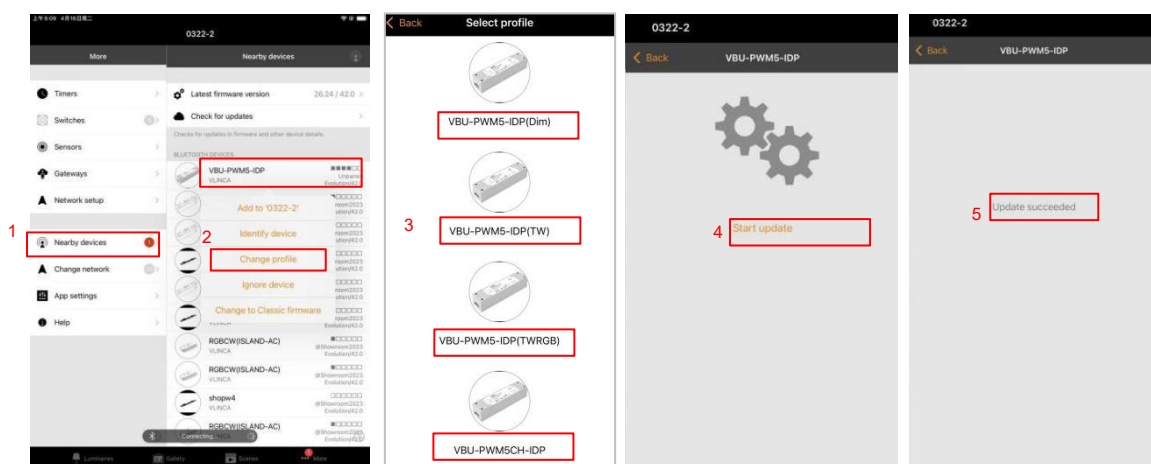


Figure 2

Button and LED indication

Reset button:

To unpair the device from other network, follow the steps in Figure 3. Then, using a needle to reach the inside reset button (as in Figure 4), and it will implement “Switch OFF and back ON again”.

LED indication:

The light flashes once indicate the device is successfully restarted.

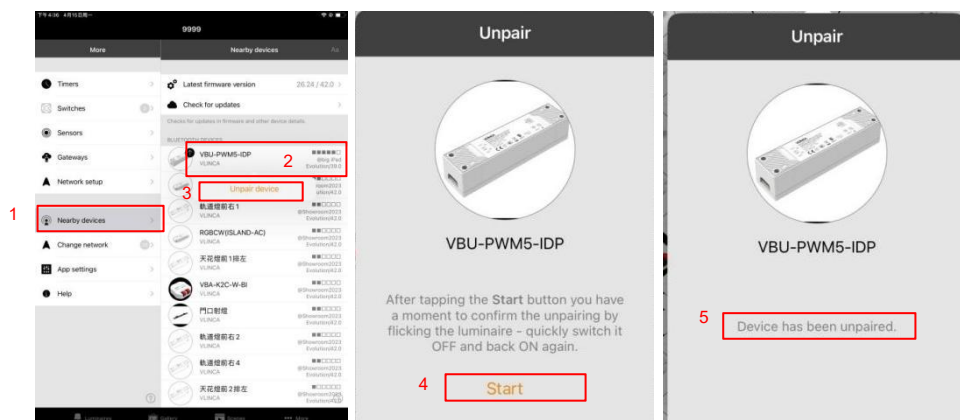


Figure 3



Figure 4

DISPOSAL INSTRUCTIONS In line with EU

Directive 2012/19/EU for waste electrical and electronic equipment (WEEE), this electrical product must not be disposed of as unsorted municipal waste. Please dispose of this product by returning it to the point of sale or to your local municipal collection point for recycling.

COMPLIANCE STATEMENT

VLINCA declares that the VBU-PWM5-IDP fully complies with Directive 2014/53/EU.

Revision record

Version	Remark	Revision date
V1.0	Newly formulate	August 10, 2024
V2.0	Output power change: from 300w@24vdc, 150w@12vdc to 240w@24vdc, 120w@12vdc	September 27, 2024
V3.0	Add profile 40185 and 39672	August 26, 2025