



VBU-T1-IDP

Version V1.0

Product Description

VBU-T1-IDP is a Bluetooth controlled, long-range, trailing-Edge dimmer, enables effortless integration of diverse lighting solutions into the Casambi smart ecosystem. Compatible with Tungsten/Halogen lamps, dimmable LED & CFL fixtures, trailing-edge LED drivers, and electronic transformers, it bridges traditional and modern lighting technologies.



Warning!

Hazardous voltages. Risk of electric shock or fire. Only qualified professionals should make the connections. Disconnect the mains power supply and verify its absence prior to installation.

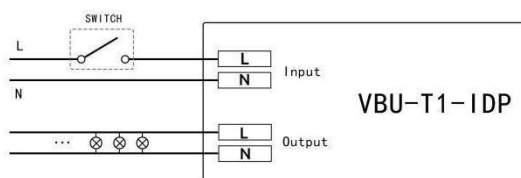


Technical data

Input	Voltage range	100-277VAC
	Frequency	50/60Hz
	Max. mains current	2A
	No-load standby power	<0.5W
output	Max output power	Tungsten or Halogen lamp: 460W @230VAC / 240W @120VAC Dimmable LED and CFL lamp: 150W @230VAC / 75W @120VAC Trailing Edge LED drivers, Electronic Transformers: 150W @230VAC / 75W @120VAC
	Max. output current	2A
Radio Transceiver	Operating frequencies:	2.402...2.480 Ghz
	Maximum output power:	+8 dBm
Operating conditions	Ambient temperature, t_a	-20°C... +45°C
	Max. case temperature, t_c	75°C
	Storage temperature	-25 °C... +75 °C
Mechanical data	Dimensions(L*W*H)	146*35.5*28 mm
	Weight	77g
	Degree of protection	IP20 (indoor use only)
Wire Connections	Wire range, stranded	0.5-2.5 mm ²
	Wire (pre-stripped) length	6-8 mm
Article Number	VBU-T1-IDP	1060800511

Wiring diagram

Wired it according to the following wiring diagram. Before proceeding, ensure power supply is disconnected and verify all components match the specified voltage/load requirements. Reference numbers correspond to the product's terminal labels.



Reset Button and LED Indication

Reset Button: To unpair the device from other network, follow the steps in **Figure 1**. Then, using a needle to reach the inside reset button (as in **Figure 2**), and it will implement “Switch OFF and back ON again”.

LED Indication: The light flashes once indicate the device is successfully restarted.

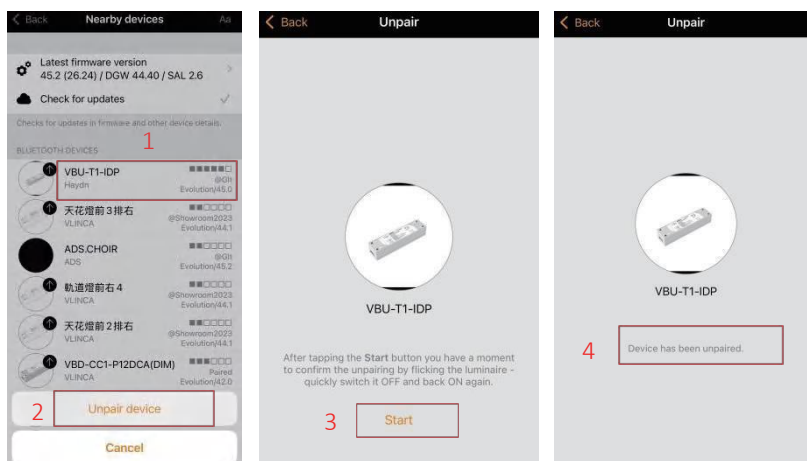


Figure 1

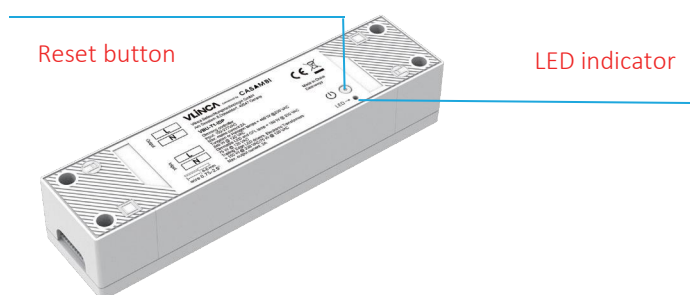


Figure 2

Directive 2012/19/ EU for waste electrical and electronic equipment (WEEE), this electrical product must not be disposed of as unsorted municipal waste. Please dispose of this product by returning it to the point of sale or to your local municipal collection point for recycling.

VLINCA declares that the VBU-T1-IDP fully complies with Directive 2014/53/EU.

[illegible]