



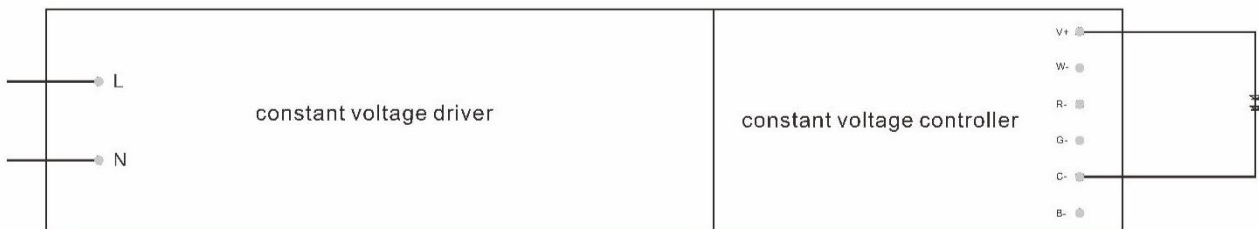
VBD-150W-CV-IDP

Version V1.0

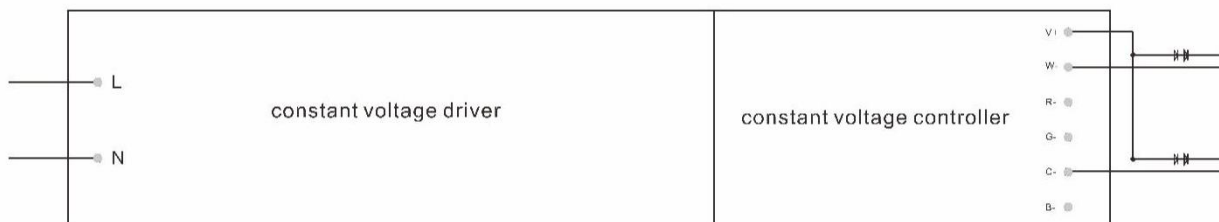
Product description

VBD-150W-CV-IDP is composed of a constant voltage driver and a bluetooth controllable, casambi enabled, five-channel constant voltage controller for constant voltage LED loads, such as LED strips and constant voltage LED modules. It can be configured with 3 different fixture profiles for 1,2,5-channel applications (dimming, tunable white, RGBCW).

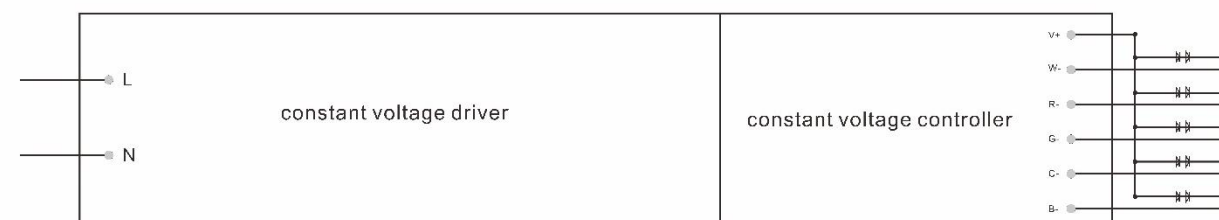
Wiring diagram, dim



Wiring diagram, tunable white



Wiring diagram, RGBCW



Driver specification parameters

Input voltage(AC)	• 220-240V
Input current	• $\leq 0.9A$
Output voltage(DC)	• 24V
Output current	• $\leq 6.25A$
Ambient temperature t_a	• $-20^{\circ}C \dots +45^{\circ}C$
Max. casing temperature t_c	• $90^{\circ}C$
Life time	• up to 50,000 h
Dimensions (L* W*H)	• 319mm * 30mm * 18mm
Degree of protection	• IP20

Controller specification parameters

Input voltage (DC)	• 24V
Output voltage (DC)	• 24V
Output power	• $\leq 150W$
Max (free allocation to channels) output current	• $\leq 6.25A$
Life time	• up to 50,000 h
Dimensions (L* W*H)	• 93mm * 30mm * 18mm
Wire range, solid	• 0,5–1 mm ²
Wire strip length	• 4-5 mm
Dimming range	• 1-100%
Effective communication distance in open air	• 50m
Protection	• Short-circuit protection

Fixture profiles

Profile#	Profile name / in app description	Description	Manual app control
33589	VBD-CV1-IDP(ISLAND-AC)3in1	For dimming application	
33590	VBD-CV2-IDP(ISLAND-AC)3in1	For tunable white application	
33591	VBD-CV5-IDP(ISLAND-AC)3in1	For RGBCW application	

Change fixture profile

- _ The default fixture profile in device is “VBD-CV5-IDP(ISLAND-AC)3in1”.
- _ If need to change the fixture profile of the device, make sure it is in unpaired status.
- _ Follow steps in Figure 1, change the fixture profile to “VBD-CV1-IDP(ISLAND-AC)3in1” or “VBD-CV2-IDP(ISLAND-AC)3in1”.

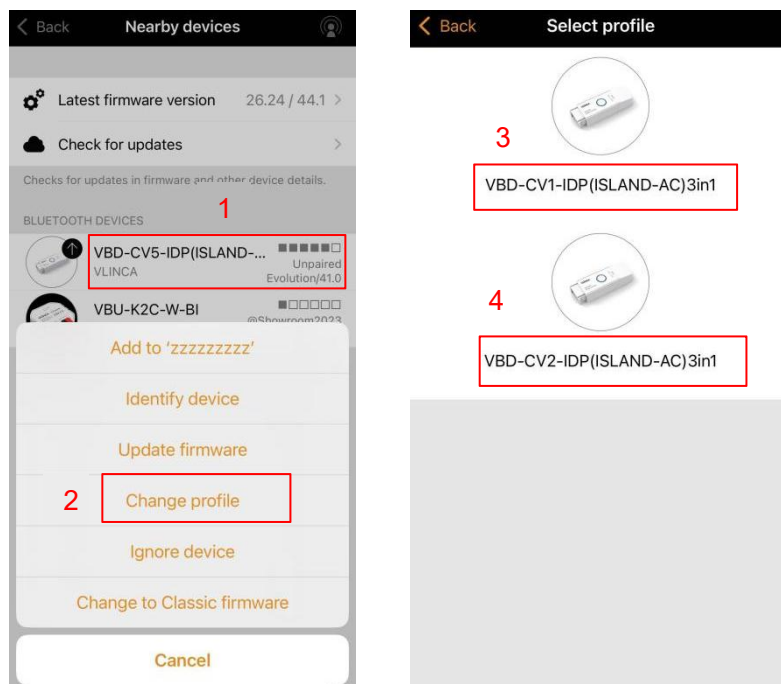


Figure 1

Reset Button

To unpair the device from other network, follow the steps in Figure 2. Then, press the reset button (as in Figure 3), and it will implement “Switch OFF and back ON again”.

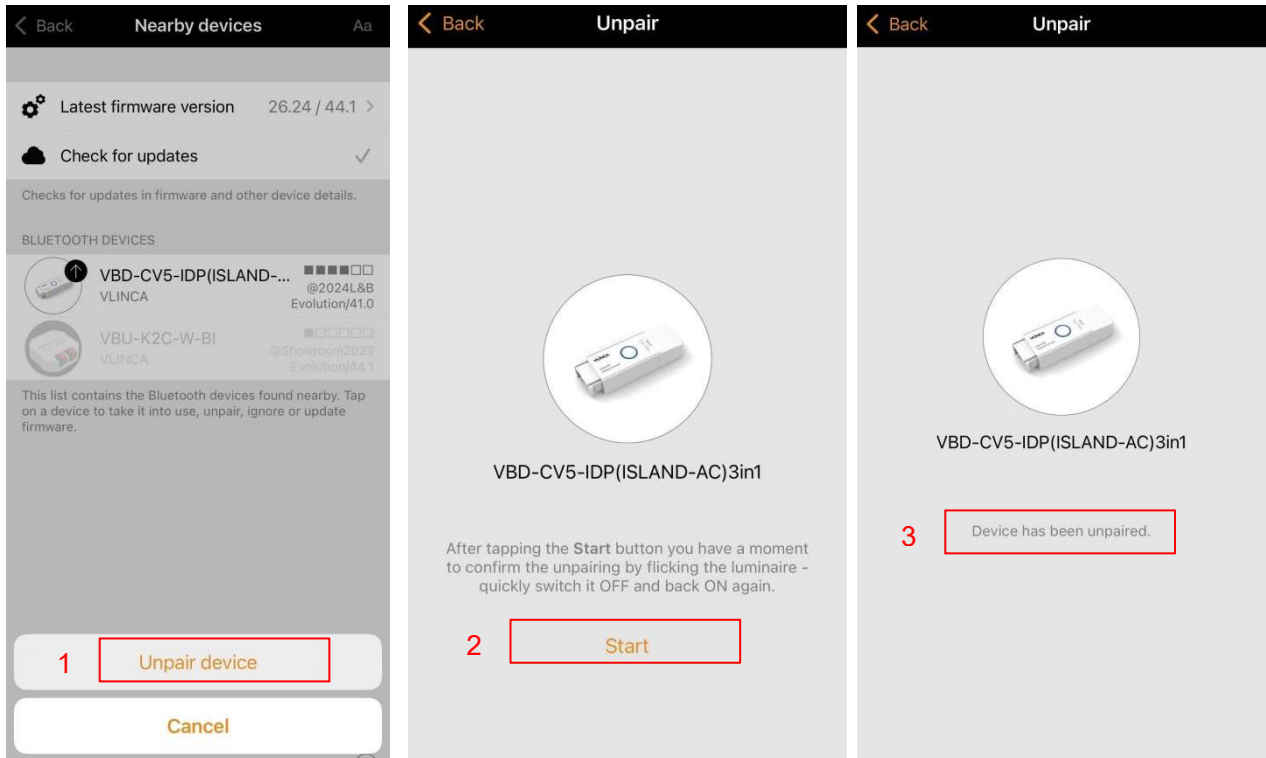


Figure 2



Figure 3

DISPOSAL INSTRUCTIONS In line with EU

Directive 2012/19/EU for waste electrical and electronic equipment (WEEE), this electrical product must not be disposed of as unsorted municipal waste. Please dispose of this product by returning it to the point of sale or to your local municipal collection point for recycling.

COMPLIANCE STATEMENT

VLINCA declares that the VBD-150W-CV-IDP fully complies with Directive 2014/53/EU.

Revision record

Version	Remark	Revision date
V1.0	Newly formulate	Nov 27, 2024