



VBA-RCS4

Version V2.0

Product description

The VBA-RCS4 is a knob remote controller for CASAMBI lighting network. the main functions include:

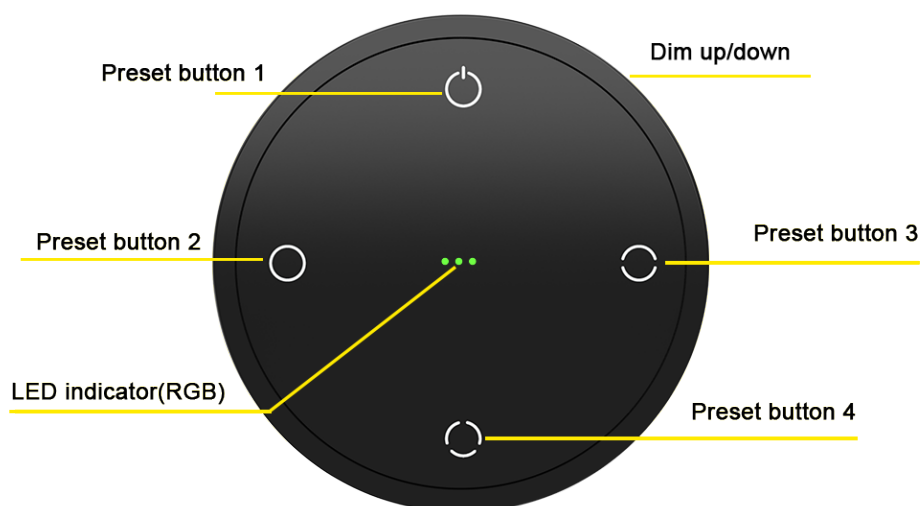
- _ Control other CASAMBI ecosystem devices.
- _ Control VLINCA VBD (driver) and VBU (bridge) devices.
- _ Rotary for dimming up(clockwise) and down(counter-clockwise).
- _ 4 Preset buttons configurable for Individual luminaire, scenes, groups, or all luminaires control.

Specification parameters

Power supply mode	<ul style="list-style-type: none"> • Lithium Battery powered • Chargeable
Battery	<ul style="list-style-type: none"> • Capacity: 600mAh • Type: Lithium-ion, 3.7V • Charge: Type-C PD (5V)
Operating conditions	<ul style="list-style-type: none"> • Operating temperature: 0°C ~ +40°C • Storage temperature: -25°C ~ +50°C • Max relative humidity: 0~65%, non - cond.
Radio Transceiver	<ul style="list-style-type: none"> • Operating frequencies: 2.402...2.480 GHZ • Maximum output power: +7 dBm • Wireless range, in open air 50 m
Physical parameter	<ul style="list-style-type: none"> • Dimensions: Ø65 x23mm • Weight: 202g • Degree of protection: IP20 (indoor use only) • Color: BK (Black) LG (Light Gold) BS (Brushed Stainless Steel) BC (Bright Chromium)
Certifications	<ul style="list-style-type: none"> • CE • RCM
Life time	<ul style="list-style-type: none"> • 5 years

Panel structure introduction

- _ The preset button from 1 to 4 can be configured for Individual luminaire, scenes, groups, or all luminaires control.
- _ Dim up or dim down the device by the Dim up/down knob rotary clockwise or counter-clockwise.
- _ The led indicator indicates what current status the device is in.



Product style



Style 1



Style 2

LED indications

On LED indicator:

Red: when charging.

Off: no operation in 3 seconds.

Green: when charging complete.

Yellow flash fast: in operation – Battery low.

Blue flash per 1 second: when it is in pairing mode.

On preset button:

Off: no operation in 3 seconds.

Blue: when rotary, the last pressed preset button.

Forced sleep mode

No lights display on all keys, only preset button 1 flashes when pressed, this means the device is in forced sleep mode.

Exit from forced sleep mode:

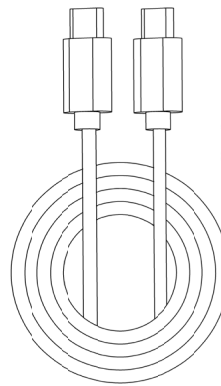
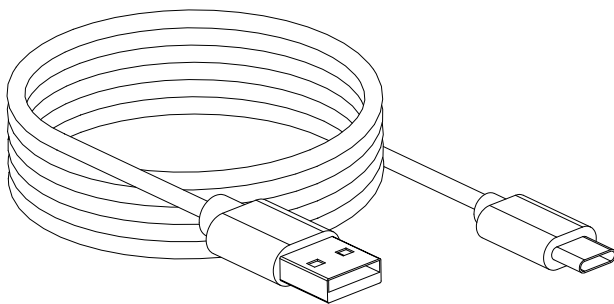
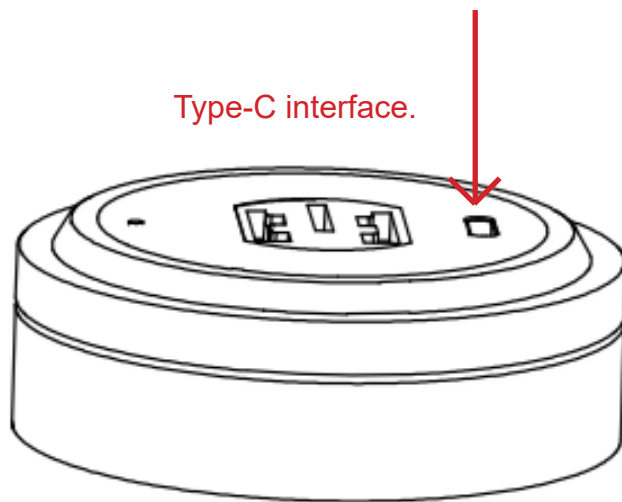
In order to reduce power consumption during transportation, the device is placed into forced sleep mode. Long press on the preset button 1 until blue lights flashes, the device successfully exit from forced sleep mode and can worked normally.

Enter into forced sleep mode:

The device is allowed to enter forced sleep mode only if it is unpaired, not in pairing mode, or not in charging state. Long press on the preset button 1 until blue lights flashes, the device successfully enter into forced sleep mode.

Charge guide

When the device is low battery, charging it timely. Charging it by 5V charger with Type-C interface.



ATTENTION:
5V charger (PD compliant)

Installation

The knob remote controller can be mounted on the base (which is an optional accessory), buy on demand.



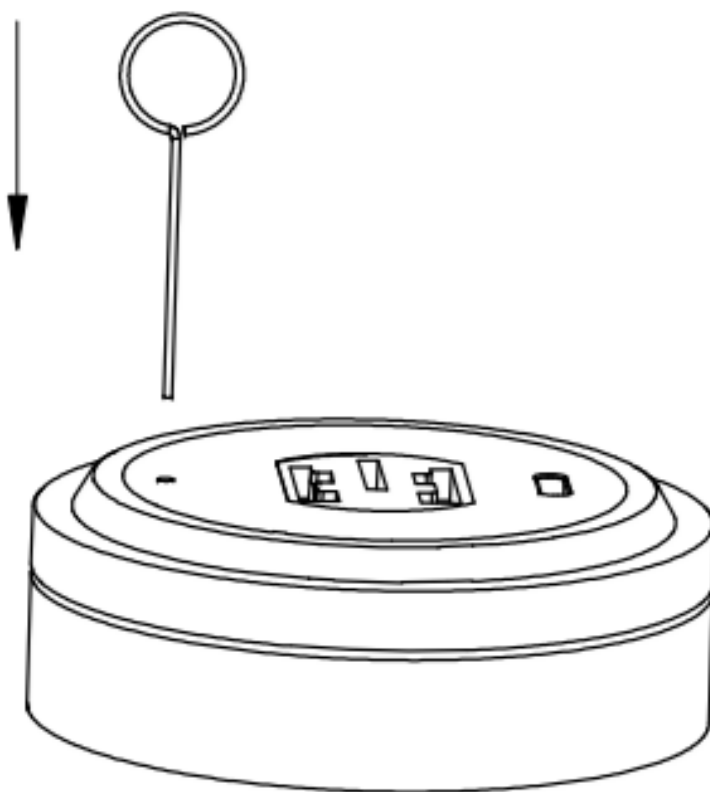
Pair VBA-RCS4

1 Set the device in “pairing mode”

With a needle, press and hold the button in the small hole at the back of the device as Picture 1 for 3 seconds then release, the led indicator will flash, it indicates the device is in “Pairing mode”.

Now VBA- RCS4 will appear in nearby device.

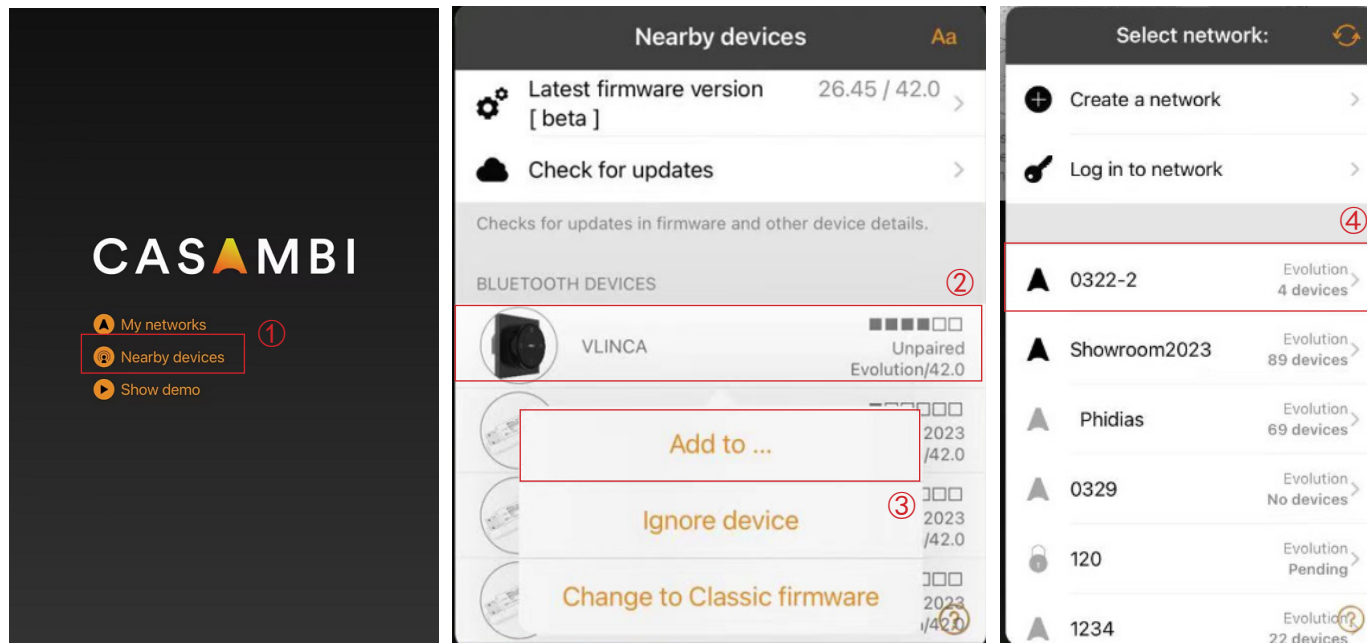
Step 1



Picture 1

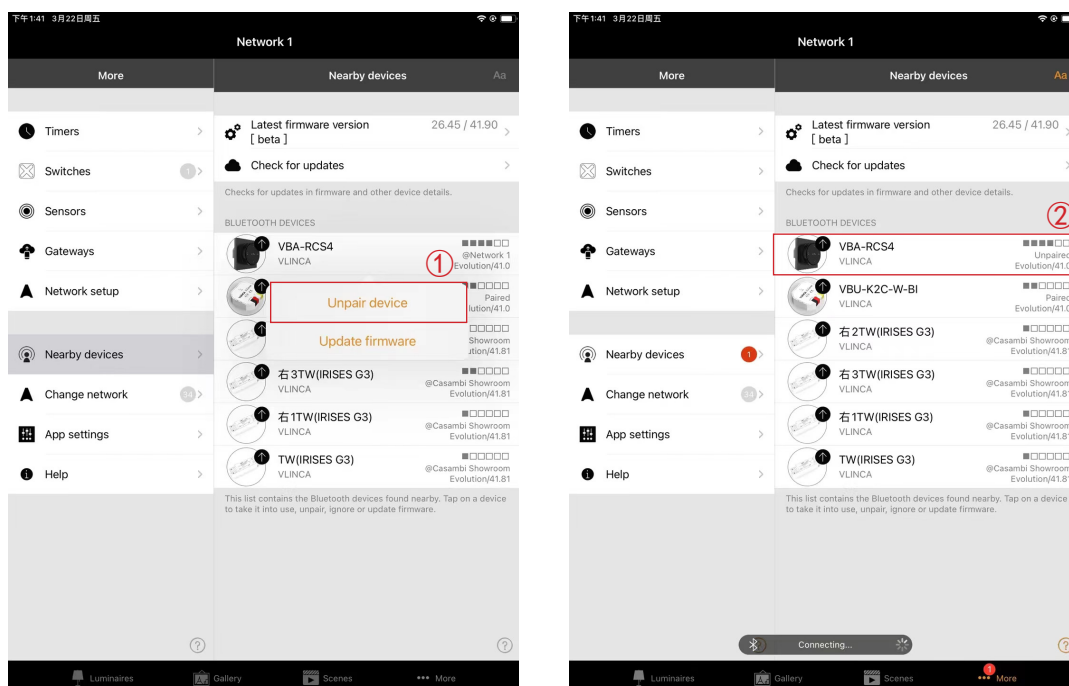
2 Pair the device into network

Long press on the VBA-RCS4 icon. If it is unpaired, add it to network (as in Picture 2).



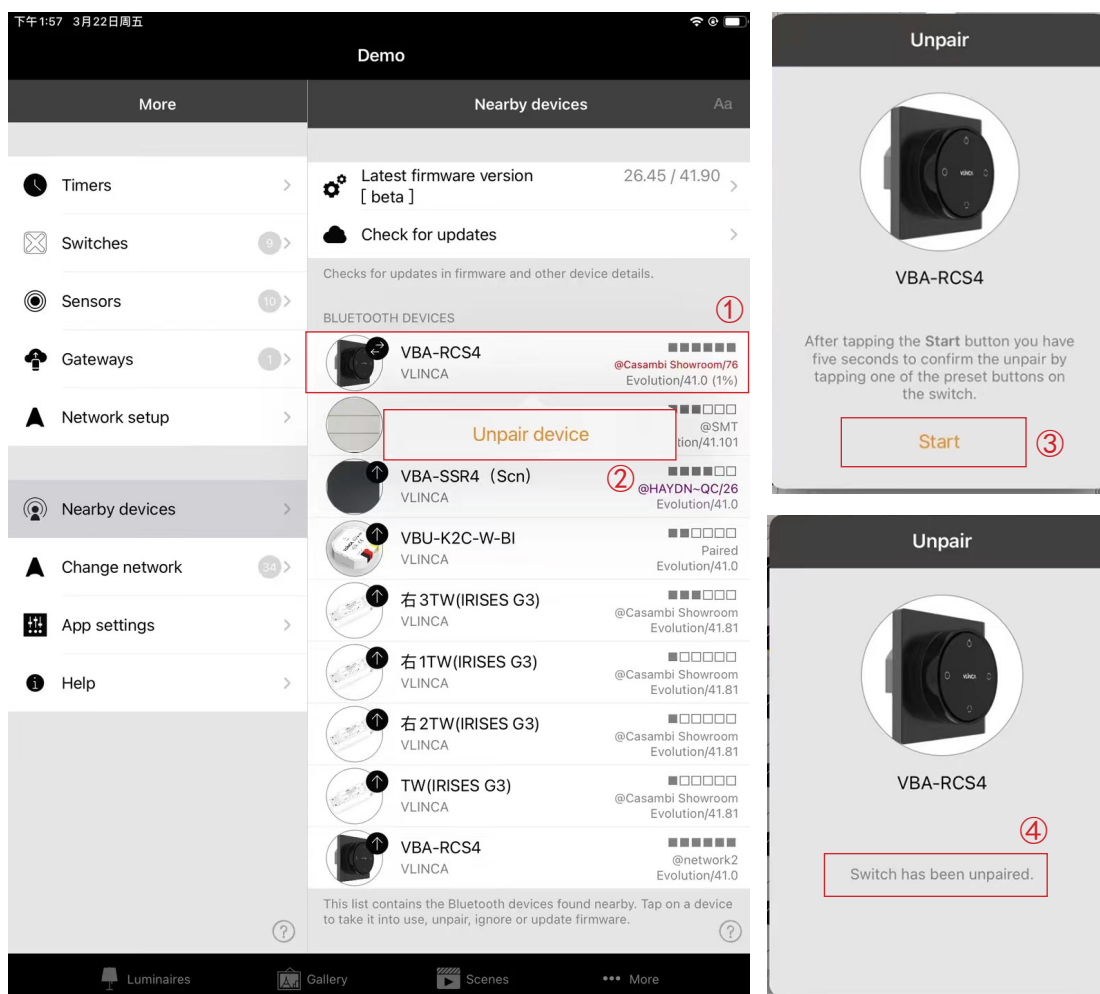
Picture 2

If it is paired in this APP but other network, click “Unpair device” in the app, then unpaired success (as in Picture 3).



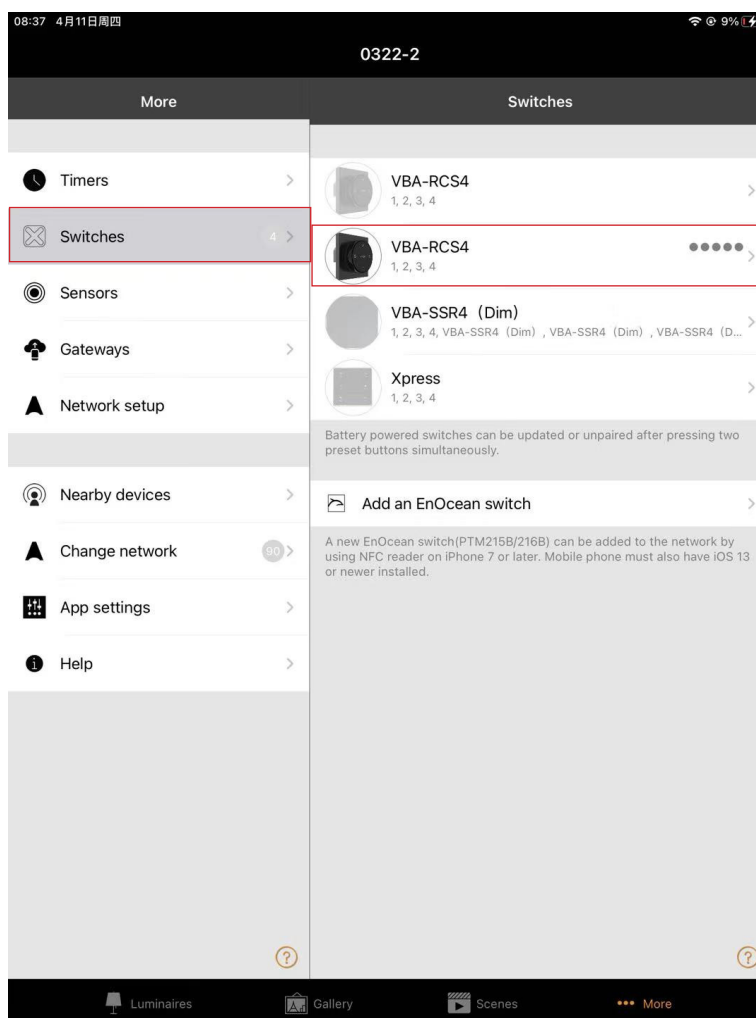
Picture 3

If it is paired by the other APP device, click “Unpair device”→”Start” in the app. When the progress bar appears, press and hold the button in the small hole at the back of the device as figure 1 once, then unpaired success (as in Picture 4).



Picture 4

Add the device to the desired network (Evolution Only).
The device will now be visible in the Switches tab (as in Picture 5).



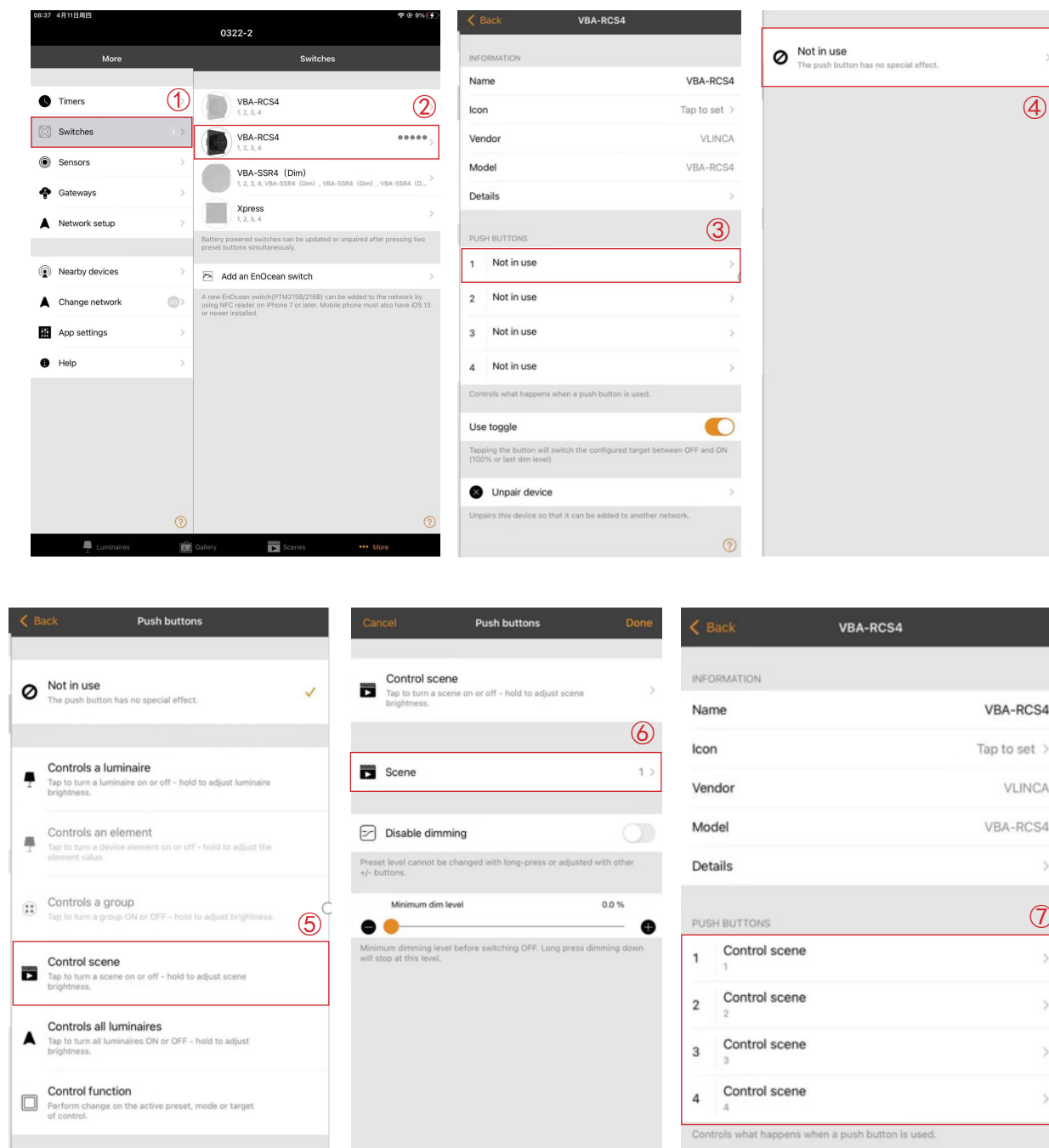
Picture 5

3 Set the device quit from “pairing mode”

After paired, press and hold the small hole as figure 1 again for another 3 seconds, the led indicator will be off and the device quit from “Pairing mode” and enter “Working mode”.

Configure VBA-RCS4

Select the push buttons of VBA-RCS4 to configure. Configure the button to control a luminaire, a group, scene, or all luminaires (as in Picture 6).



Picture 6

The product has a built-in lithium battery, please use it with caution.

- ## DISPOSAL INSTRUCTIONS In line with EU

COMPLIANCE STATEMENT

Revision record

[illegible]