



VBA-RCS4

Version V1.0

Product description

The VBA-RCS4 is a knob remote controller for CASAMBI lighting network. the main functions include:

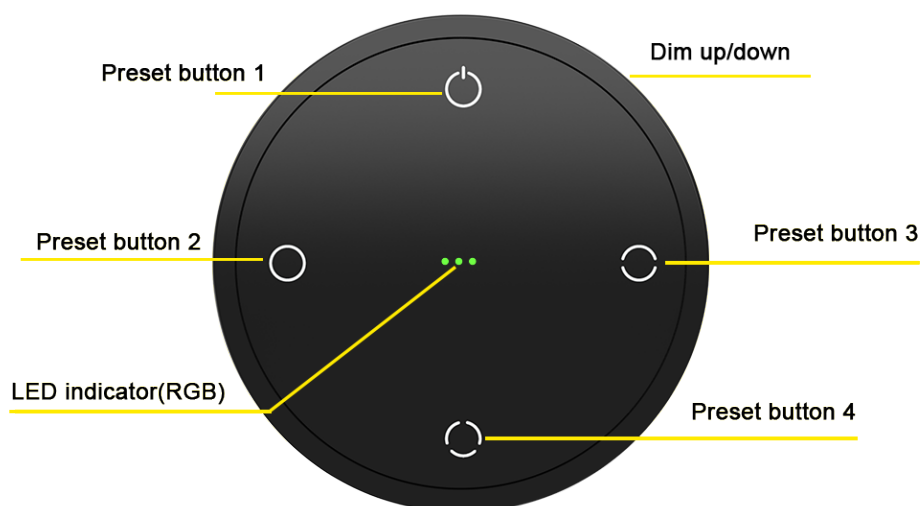
- _ Control other CASAMBI ecosystem devices.
- _ Control VLINCA VBD (driver) and VBU (bridge) devices.
- _ Rotary for dimming up(clockwise) and down(counter-clockwise).
- _ 4 Preset buttons configurable for Individual luminaire, scenes, groups, or all luminaires control.

Specification parameters

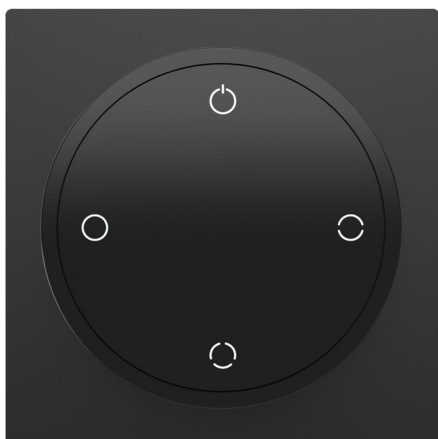
Power supply mode	<ul style="list-style-type: none"> • Lithium Battery powered • Chargeable
Battery	<ul style="list-style-type: none"> • Capacity: 600mAh • Type: Lithium-ion, 3.7V • Charge: Type-C PD (5V)
Operating conditions	<ul style="list-style-type: none"> • Operating temperature: 0°C... +40°C • Storage temperature: -25°C... +70°C • Max relative humidity: 0...80%, non - cond.
Radio Transceiver	<ul style="list-style-type: none"> • Operating frequencies: 2.402...2.480 GHZ • Maximum output power: +8dBm • Wireless range, in open air ≤ 50 m
Physical parameter	<ul style="list-style-type: none"> • Dimensions: Ø65 x23mm • Weight: 202g • Degree of protection: IP20 (indoor use only) • Color: BK (Black) LG (Light Gold) BS (Brushed Stainless Steel) BC (Bright Chromium)
Certifications	<ul style="list-style-type: none"> • CE
Life time	<ul style="list-style-type: none"> • 5 years

Panel structure introduction

- _ The present button from 1 to 4 can be configured for Individual luminaire, scenes, groups, or all luminaires control.
- _ Dim up or dim down the device by the Dim up/down knob rotary clockwise or counter-clockwise.
- _ The led indicator indicates what current status the device is in.



Prouduct style



Style 1



Style 2

LED indications

On LED indicator:

Red: when charging.

Off: no operation in 3 seconds.

Green: when charging complete.

Yellow flash fast: in operation – Battery low.

Blue flash per 1 second: when it is in pairing mode.

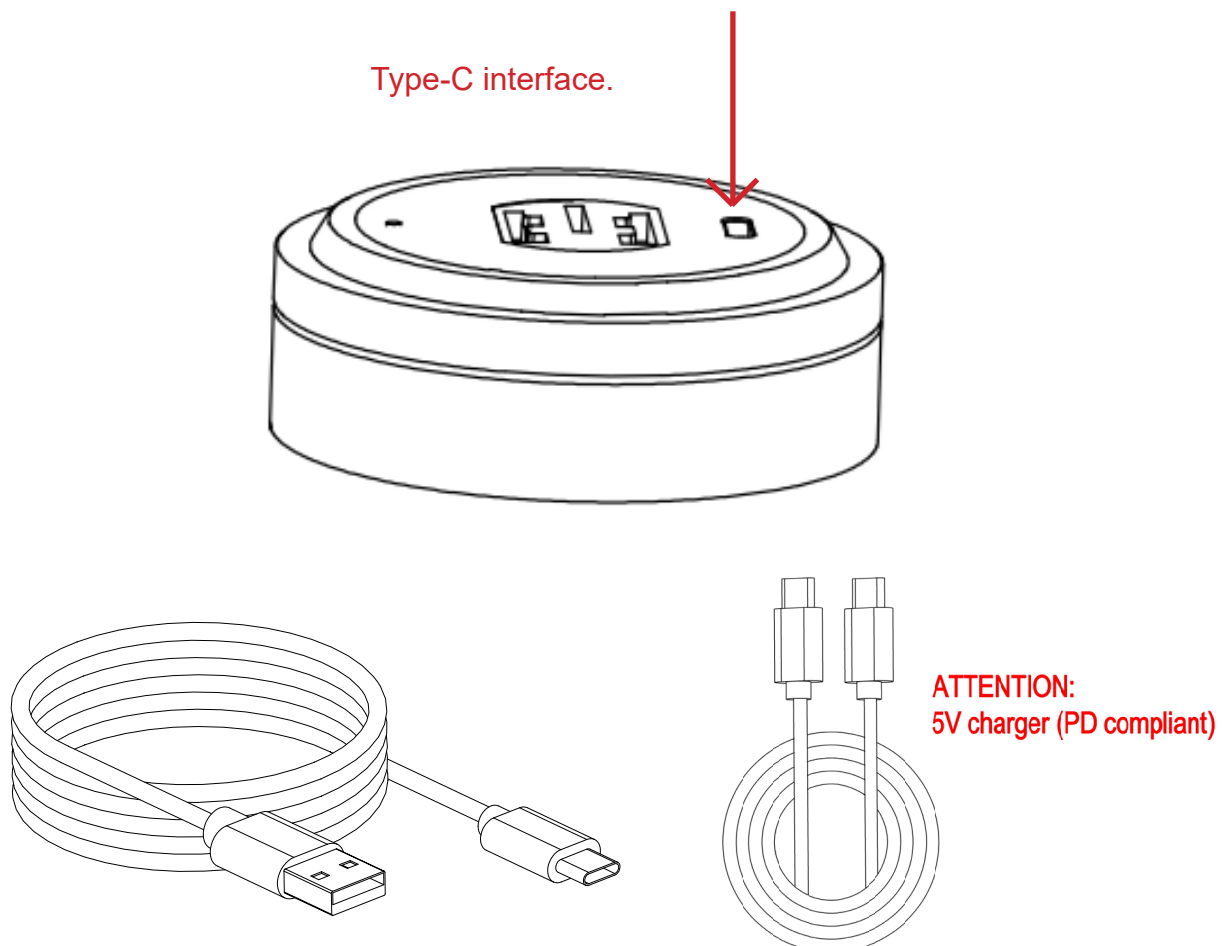
On preset button:

Off: no operation in 3 seconds.

Blue: when rotary, if selected preset is active.

Charge guide

When the device is low battery, charging it timely. Charging it by 5V charger with Type-C interface.



Installation

The knob remote controller can be mounted on the base (which is an optional accessory), buy on demand.



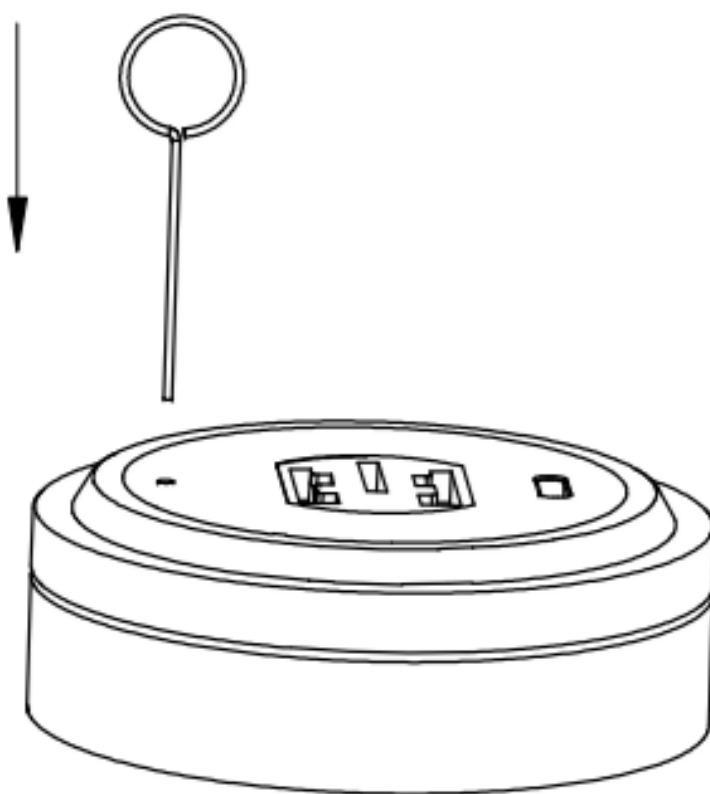
Pair VBA-RCS4

1 Set the device in “pairing mode”

With a needle, press and hold the button in the small hole at the back of the device as Picture 1 for 3 seconds then release, the led indicator will flash, it indicates the device is in “Pairing mode”.

Now VBA- RCS4 will appear in nearby device.

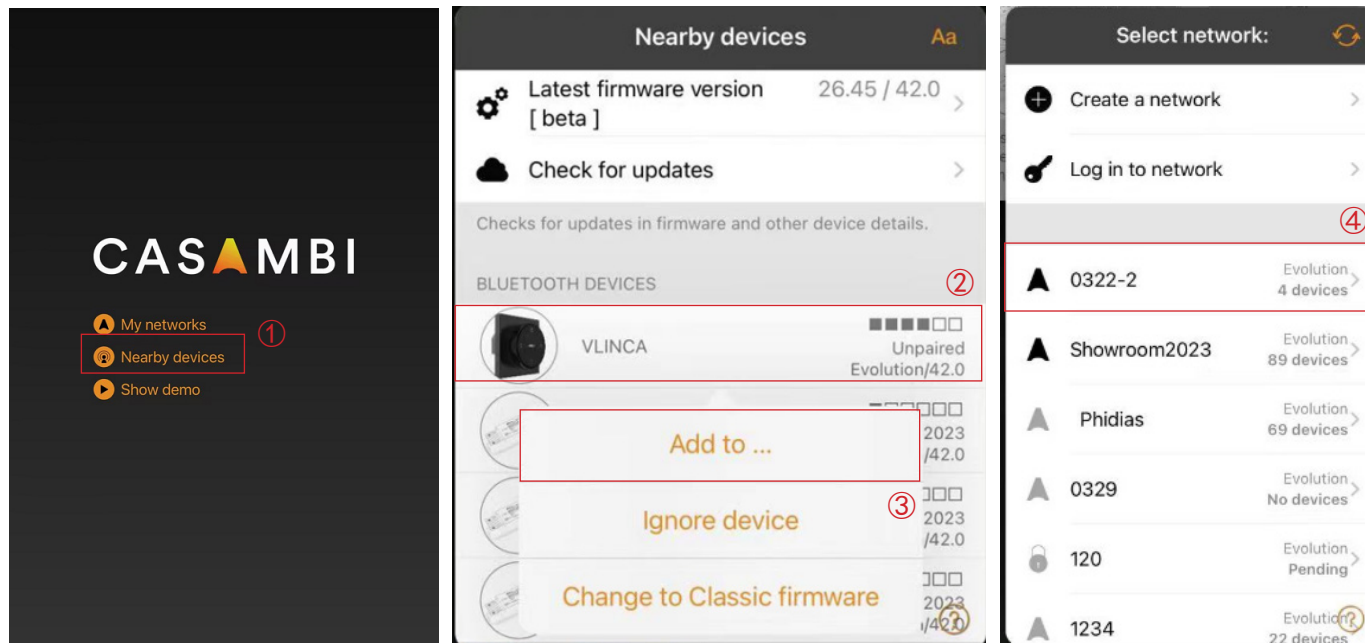
Step 1



Picture 1

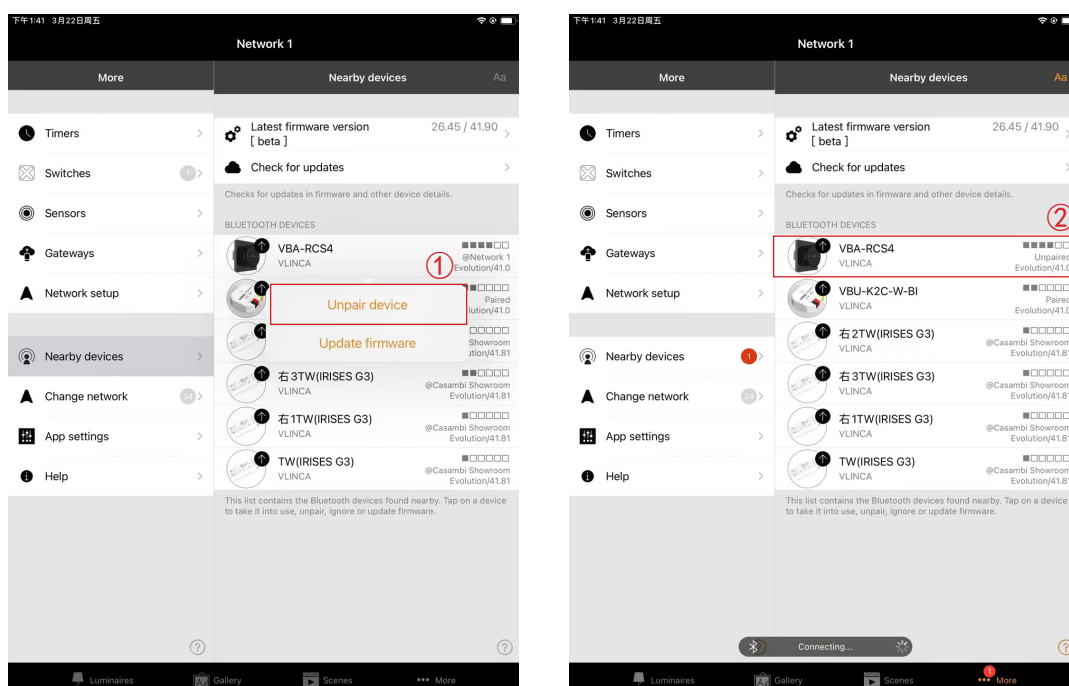
2 Pair the device into network

Long press on the VBA-RCS4 icon. If it is unpaired, add it to network (as in Picture 2).



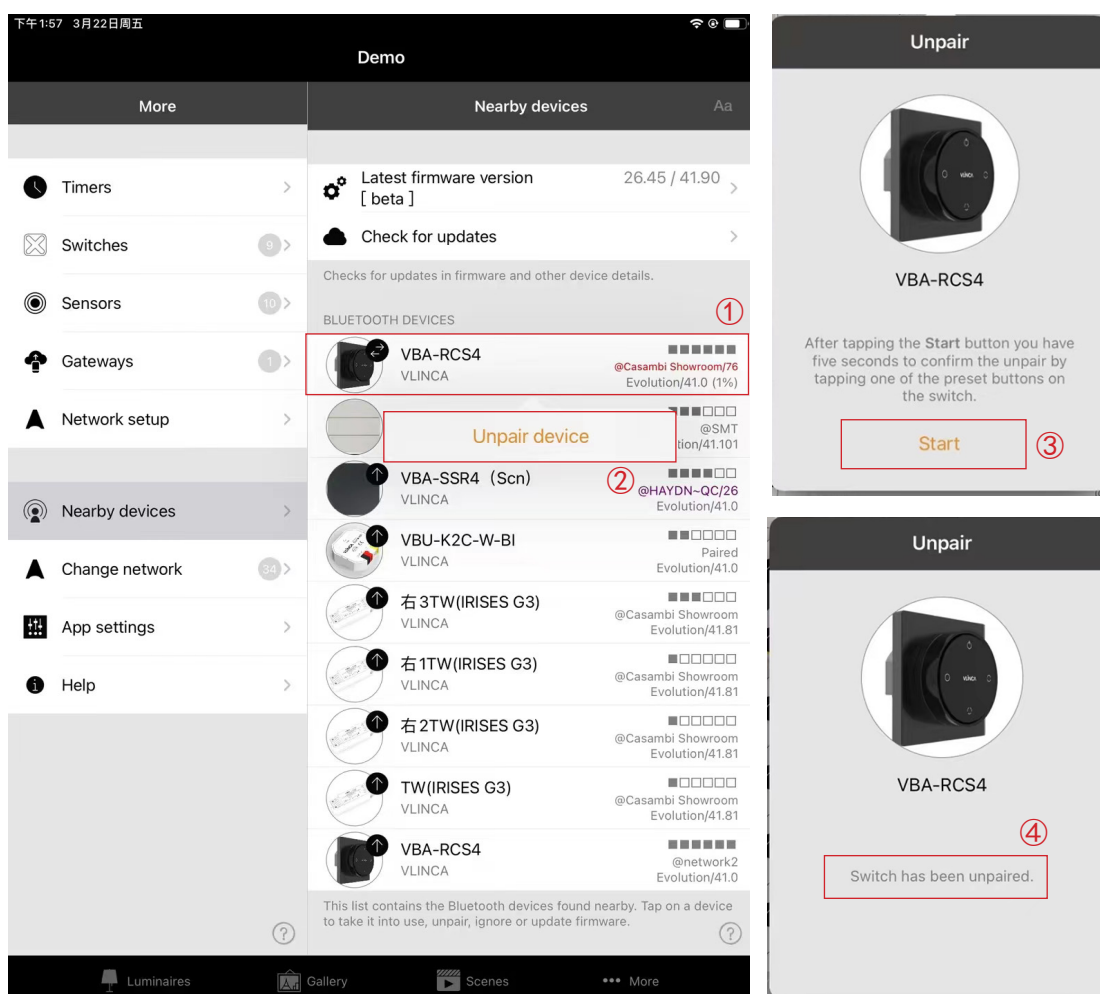
Picture 2

If it is paired in this APP but other network, click “Unpair device” in the app, then unpaired success (as in Picture 3).



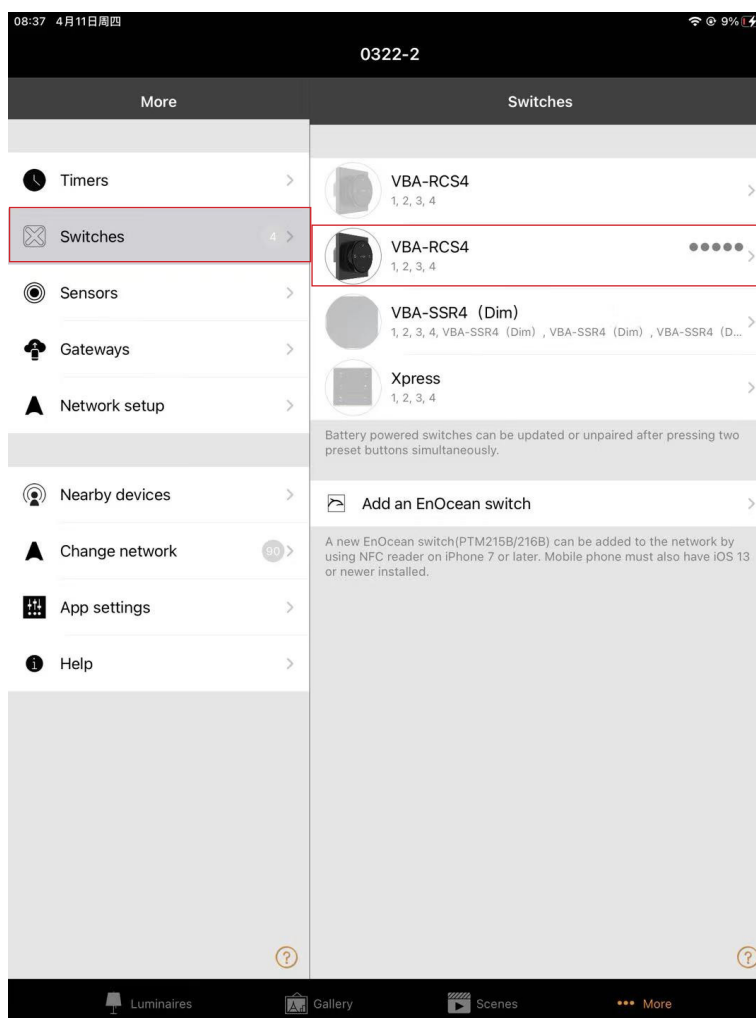
Picture 3

If it is paired by the other APP device, click “Unpair device”→”Start” in the app. When the progress bar appears, press and hold the button in the small hole at the back of the device as figure 1 once, then unpaired success (as in Picture 4).



Picture 4

Add the device to the desired network (Evolution Only).
The device will now be visible in the Switches tab (as in Picture 5).



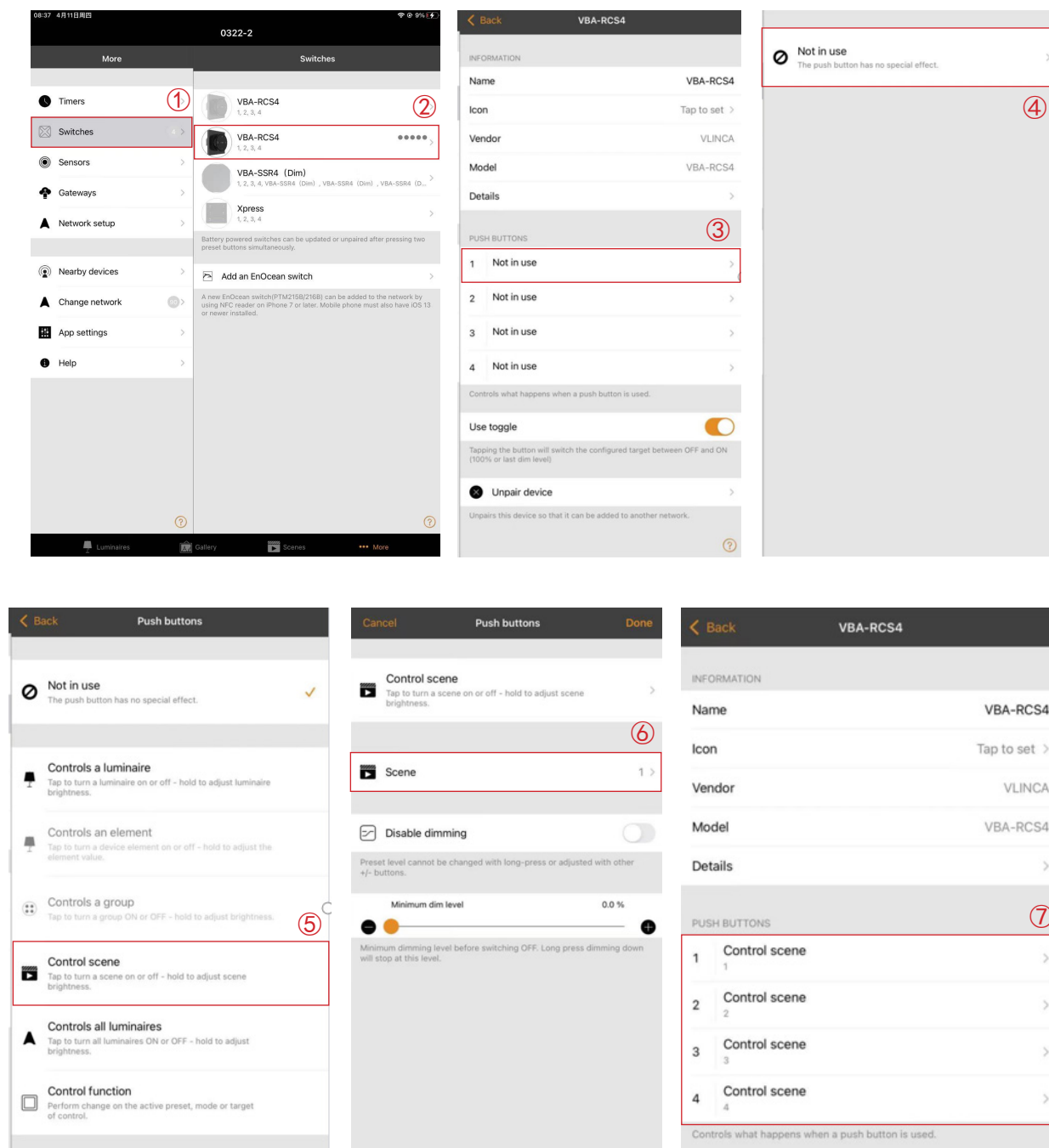
Picture 5

3 Set the device quit from “pairing mode”

After paired, press and hold the small hole as figure 1 again for another 3 seconds, the led indicator will be off and the device quit from “Pairing mode” and enter “Working mode”.

Configure VBA-RCS4

Select the push buttons of VBA-RCS4 to configure. Configure the button to control a luminaire, a group, scene, or all luminaires (as in Picture 6).



Picture 6

Directive 2012/19/EU for waste electrical and electronic equipment (WEEE), this electrical product must not be disposed of as unsorted municipal waste. Please dispose of this product by returning it to the point of sale or to local municipal collection point for recycling.

CASAMBI declares that the VBA-RCS4 fully complies with Directive 2014/53/EU.

[illegible]